

DELTA SIGMA PI

SPONSORSHIP PACKAGE

LAMBDA SIGMA CHAPTER
EST. 1986

DELTA SIGMA PI

Delta Sigma Pi (Lambda Sigma Chapter) is a professional business fraternity at California State University, Fullerton. Lambda Sigma serves our community by executing service and professional events, and activities to strengthen our brotherhood.

www.csufdsp.net

ABOUT DELTA SIGMA PI

Delta Sigma Pi is a professional fraternity organized to foster the study of business in universities; to encourage scholarship, social activity and the association of students for their mutual advancement by research and practice; to promote closer affiliation between the commercial world and students of commerce, and to further a higher standard of commercial ethics and culture and the civic and commercial welfare of the community. Delta Sigma Pi was founded in 1907 at the New York University and today has more than 260 chapters and over 220,000 members supporting the goals and ideals of the Fraternity.



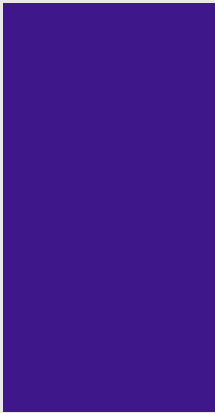
ABOUT OUR CHAPTER LAMBDA SIGMA

Lambda Sigma is a chapter of Delta Sigma Pi located at California State University, Fullerton. We are a diverse group of highly motivated and successful students from various academic, professional, and personal backgrounds. Our brothers possess traits such as integrity, altruism, determination, and leadership. Every semester we recruit students that hold true to these traits so that we can further strengthen them into business leaders of tomorrow. Since 1986, we have made a substantial impact on our campus and community through our three pillars.

- Professionalism**
- Community service**
- Brotherhood**

ESTABLISHED

1986



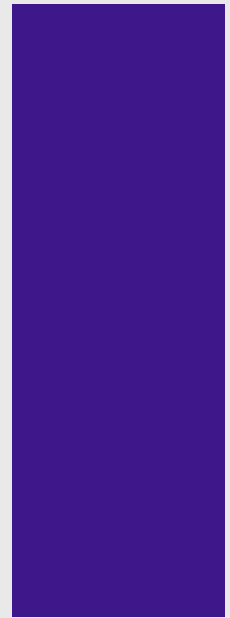
63+

**ACTIVE
BROTHERS**

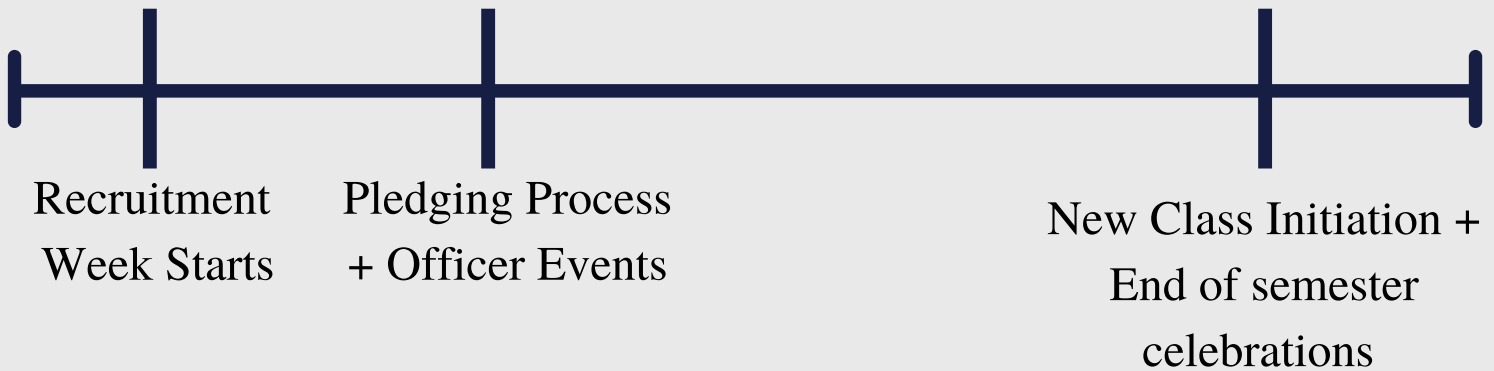


715+

**TOTAL
BROTHERS**



A look into our timeline...



Recruitment Week

- Five Events in two weeks
 - Meet the Chapter
 - Game Night
 - Service Event
 - Professional Event
 - General Business Meeting
- Booth reservation for campus Club Rush (over 2000 students attend)
- Marketing on various social media platforms
- 35+ tabling sessions on campus
 - 15+ classroom presentations with respected professors.

Rest of Semester

- Executes 2-4 philanthropic events per semester
- 3-4 professional events per semester (in addition to events from recruitment week).
- Collaboration with multiple other fraternities on campus.
- Direct connections with Accounting, marketing, and finance clubs on campus.
- Ceremonies to congratulate outstanding brother performance.

Emphasis on philanthropy and professionalism

Wide use of social media platform advertising

Collaboration with over 30000+ business students at CSUF.

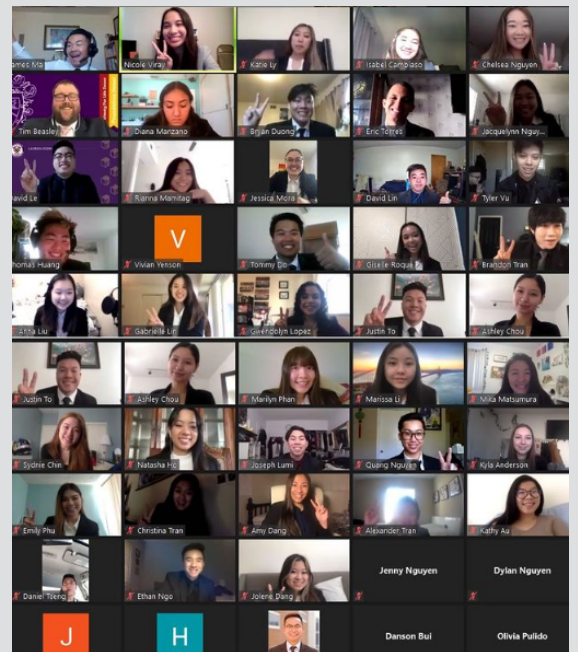
Past Events



Professional Event: Resume Workshop



Recruitment Event: Game Night



General Business Meeting

Lambda Sigma strives for excellence...

Chapter Recognitions



CMP Recognition Level- Chapter of Excellence

**2019 2018
2014**



**Regional Award – R. Nelson Mitchell
Outstanding Collegiate Chapter Award**

2020



**Regional Award – Outstanding Financial
Operations Award for a Collegiate Chapter**

2020



**Regional Award – Outstanding Professional
Activities Award for a Collegiate Chapter**

**2020
2019**



20+ Total awards

Sponsorship Package Levels

ROSE SPONSOR (\$400 min)

- Permission to include company information in our monthly newsletter (sent to 750+ alumnus and current brothers).
- Logo included on banners for philanthropic events.
- Support with campus recruitment (tabling on campus, networking)
- All of below.

GOLD SPONSOR (\$300 min)

- Company logo included on our recruitment flyers.
- Includes company at the end of classroom presentations during recruitment week.
- Include any company merchandise or flyers on our booths during tabling sessions (35+ sessions during recruitment week)
- All of below.

COMMUNITY FRIEND (\$150 min)

- Company logo on chapter t-shirts and zoom background (will be used throughout recruitment events).
- Invitation to our events.
- Company link and logo will be included on our website.

Reach out to us!

For further information regarding the payment method, please send us an email with the following information.

- 1. Associated Company**
- 2. Package Inquiry**
- 3. Contact Name/ Position**
- 4. Contact Number**

Ashley Chou
president.dspsuf@gmail.com

csufdsp.net